

What is new

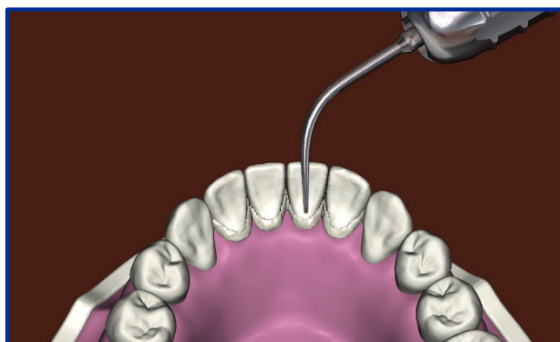
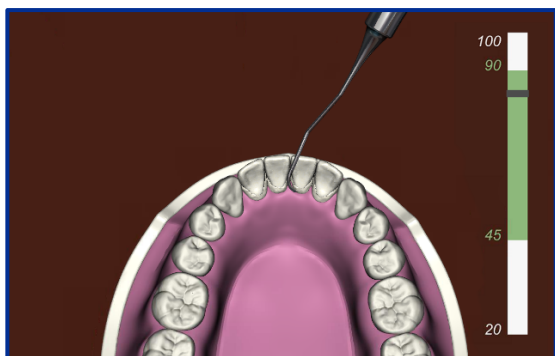
Simodont Courseware v4.22



WHAT IS NEW IN V4.22

Nissin Dental Products is pleased to inform you of the new software release version v4.22. This document will give a short summary of the highlights in this release and what it offers you as a Simodont user. For the complete list of changes please refer to the Release Notes.

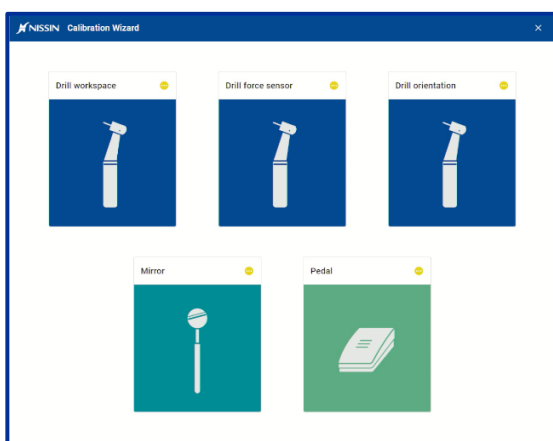
New functionality



PERIODONTICS – extension

The v4.22 release introduces:

- Two new cases using the lower front teeth of the 700HPRO model. One for ultrasonic scaling and one with hand scaling using the new H6/7 sickle scaler and Gracey 1/2 curettes.
- It is now possible to use hand scalers and curettes in all directions. Before you could only pull the scalers in the direction of the tooth's long axis. The tool's angulation feedback is given in relation to the tooth surface at the location of touch.
- The overall performance is approved by only requesting data for those teeth that are in contact with the instrument. This allows for "smoother" scaling experience.
- An improvement was made to the allowed size of remaining calculus. This was done to avoid that super small pieces of calculus, not noticeable for the eye, could stay behind. Which made it impossible to reach a score of 100%.



New calibration Wizard

The calibration Wizard has been redesigned to have a more modern user interface.

The new wizard:

- gives direct access to the different calibration procedures.
- saves the newly calibrated values automatically after successful calibration.
- allows cancellation of a started calibration to return to main menu.
- automatically identifies the haptic display configuration to set for the correct gain. When this happens, a dialog opens with the option for the user to replace the current values. Typically, this is only applicable after a hardware replacement.

Not available anymore are:

- download report
 - information panel
 - side navigation menu
 - manual save button
-

Various improvements & bug fixes

- **Change – User roles and rights:** A user with a “Teacher” role now has additional user rights. This includes publish a case; import, publish, edit, export and delete a model; create a new model by importing a patient scan. A user with a “Student assistant” role now has additional user rights to create a new model by importing a patient scan.
 - **Change – Collapsed courses:** In the Dental Trainer case overview, all courses in the assigned cases tab and all procedures in the free practice tab are now by default collapsed.
 - **Improvement – Enlarge tooth preview images:** All intra oral tooth images can be enlarged from the tooth details section. Especially for viewing the location of calculus deposits this is a useful extension of functionalities.
 - **Fix – Delete snapshots:** The student can now delete snapshots from a previously unsubmitted attempt.
 - **Fix – False red cross state:** Fixed a bug where the alignment cross in the simulator screen was incorrectly indicating a failure in the Realtime system.
 - **Fix – Haptic length of implant gauge:** Fixed a bug where the haptic length of some of the preparation gauges was not in line with visual length.
 - **Fix – Case grouping:** Fixed a bug where the case grouping feature, as part of course planning, could get unresponsive in certain situations. For example, when submitting a new revision for a case or when deleting the case.
-



Nissin Dental Products Europe BV

Pesetaweg 51 | 2153 PJ Nieuw-Vennep | The Netherlands

Phone: +31 85 081 4900

www.simodontdentaltrainer.com

www.nissin-dental.net