

What is new

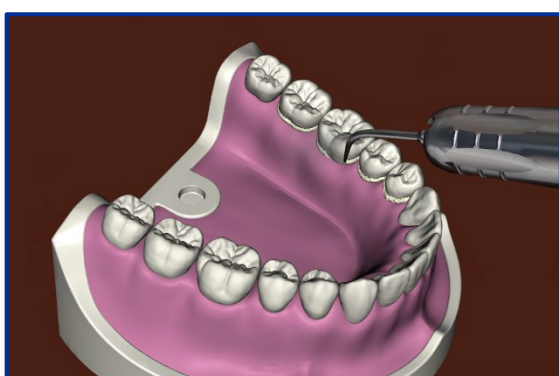
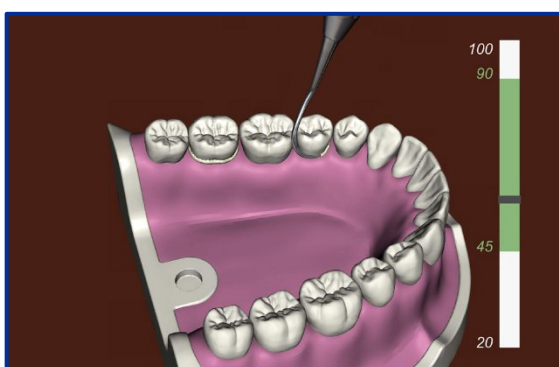
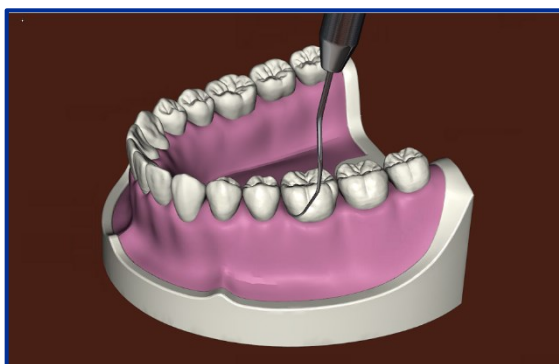
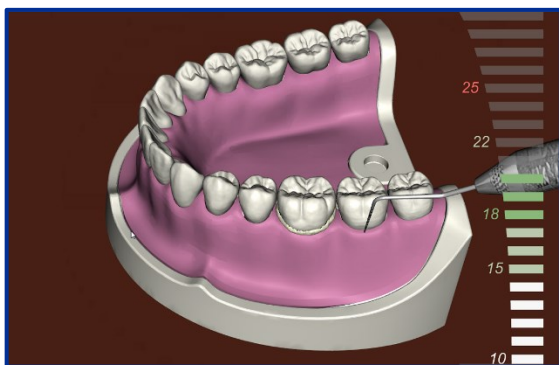
Simodont Courseware v4.20



WHAT IS NEW IN V4.20

Nissin Dental Products is pleased to inform you of the new software release version v4.20. This document will give a short summary of the highlights in this release and what it offers you as a Simodont user. For the complete list of changes please refer to the Release Notes.

New functionality



PERIODONTICS – NEW procedure in Simodont!

The v4.20 release introduces the periodontics procedure on Simodont, focusing on the basics of periodontal measurements, calculus detection and removal.

The new procedure comes with new features and 5 new cases using a prototype of the Nissin 700HPRO typodont. The model contains haptic teeth at positions 34, 35, 36 and 37. For the calculus detection and removal cases the model contains subgingival and / or supragingival calculus deposits. For the periodontal measurements case, it contains various pocket depths.

This new feature set includes also:

- New hand instruments and an ultrasonic scaler
- Real-time feedback on the probing force
- Real-time hand scaler angulation assistance
- Possibility to register values for periodontal measurements and calculus detection per tooth surface, and compare the readings with the actual values
- Ability to color the calculus via the calculus detection button
- Ability to show and hide the gingiva
- Statistics for calculus removal compared to the total amount of calculus per tooth

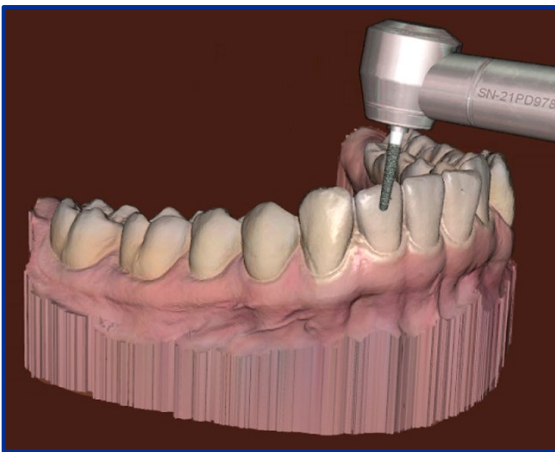
Please refer to the content catalog for a complete overview of the new periodontology cases.

Federated Authentication

This new feature facilitates integration of the Simodont Courseware with the university's user authentication system. With this new feature security measures can be elevated by centralizing access control and management.

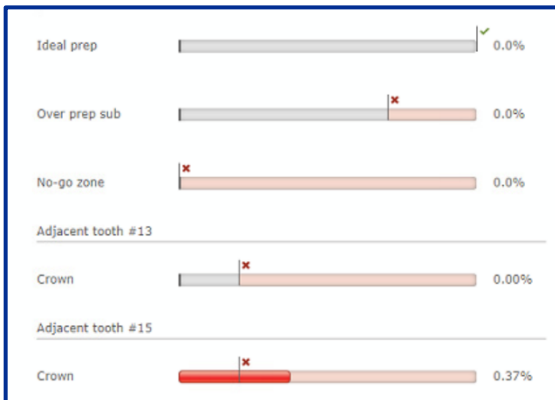
This is an optional feature. Implementation of this feature is executed on request.

Improved functionality



Show full patient scan in Simodont

The v4.20 release improves the patient scan experience by showing the complete scan in the simulator. The part of the scan that falls inside the 'region of interest' is provided as a haptic drillable model. The remainder of the scan is provided for pure visual reference.



Adjacent teeth statistics

Separate statistics for the individual adjacent teeth are now tracked, to improve the assessment of accidental touches during treatment.

By splitting the adjacent teeth statistics, it is now clear which of the neighboring teeth was accidentally touched during treatment and to which extent. These statistics can also be incorporated in the pass/fail criteria and scoring formula.

Teacher approval for restarting an exam

Teachers can now approve or reject exam retake requests directly from the Simodont Courseware. In the situation that a student wants to re-do the exact same exam, the teacher will be notified on the Teacher Station Application and can accept or reject the request and thereby allow or block the student from continuation. RFID activation is not needed to use this feature.

Various improvements/changes

- Improvement – In the model selection page of the case editor workflow, more space is created to see the selected teeth and the tooth details in one screen.
 - Improvement – In the case editor workflow, on the treatment execution page, procedure specific settings will now only be shown when they are applicable.
 - Improvement – With the new on-screen keyboard on the Simodont the user experience is improved. For example, numbers are now directly accessible and removing content from a text field can now be executed by a long press of the backspace key.
-



Nissin Dental Products Europe BV

Pesetaweg 51 | 2153 PJ Nieuw-Vennep | The Netherlands

Phone: +31 85 081 4900

www.simodontdentaltrainer.com

www.nissin-dental.net